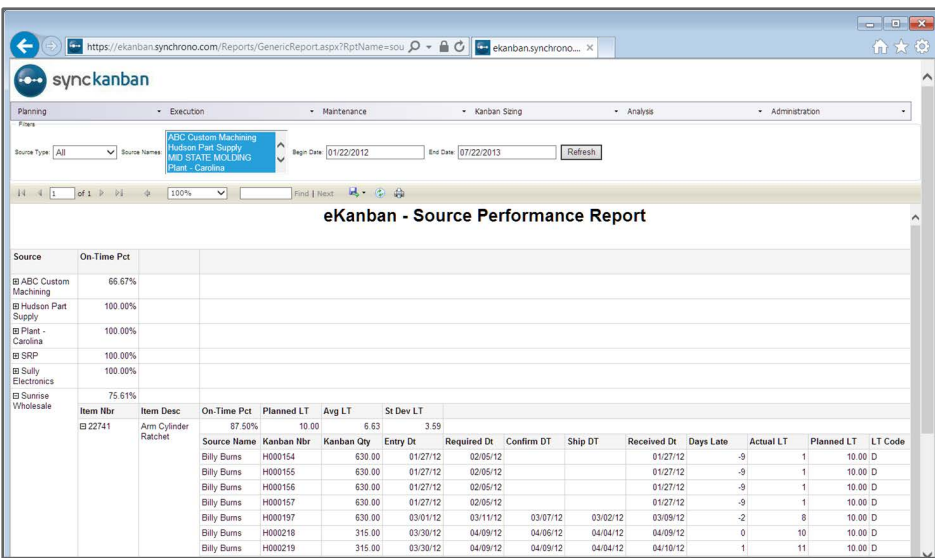


Pull-based inventory replenishment software

Clarity, control and confidence in eKanban software yields competitive advantage

Synckanban™ pull-based inventory replenishment software for supply chain execution and collaboration provides continuously refreshed, powerful information to right-size inventory levels and maximize workflow. It monitors consumption and replenishment across every facet of the manufacturing cycle – from suppliers to manufacturing to transfer kanbans – healing the performance problems that come with unsynchronized, systems. The solution also creates a collaborative relationship with suppliers and allows sales to make promises they can keep. Synckanban provides the ability to respond accurately and instantly from any point in the KLoop™ to eliminate strains on the system before they impact delivery times or customer relationships. Data-based reporting empowers decision making and allows supply managers to focus on more value-added activities, delivering more capacity and a competitive advantage.



Source	On-Time Pct
ABC Custom Machining	66.67%
Hudson Part Supply	100.00%
Plant - Carolina	100.00%
SRP	100.00%
Sully Electronics	100.00%
Sunrise Wholesale	75.61%

Item Nbr	Item Desc	On-Time Pct	Planned LT	Avg LT	St Dev LT
22741	Arm Cylinder Ratchet	87.50%	10.00	6.63	3.59

Source Name	Kanban Nbr	Kanban Qty	Entry Dt	Required Dt	Confirm Dt	Ship Dt	Received Dt	Days Late	Actual LT	Planned LT	LT Code
Billy Bums	H000154	630.00	01/27/12	02/05/12			01/27/12	-9	1	10.00	D
Billy Bums	H000155	630.00	01/27/12	02/05/12			01/27/12	-9	1	10.00	D
Billy Bums	H000156	630.00	01/27/12	02/05/12			01/27/12	-9	1	10.00	D
Billy Bums	H000157	630.00	01/27/12	02/05/12			01/27/12	-9	1	10.00	D
Billy Bums	H000197	630.00	03/01/12	03/11/12	03/07/12	03/02/12	03/09/12	-2	8	10.00	D
Billy Bums	H000218	315.00	03/30/12	04/09/12	04/06/12	04/04/12	04/09/12	0	10	10.00	D
Billy Bums	H000219	315.00	03/30/12	04/09/12	04/09/12	04/04/12	04/10/12	1	11	10.00	D

Monitor and respond instantly to changes in demand, keeping inventories at their lowest levels, while maintaining the right amount of materials on hand. Automatically adjust and re-size kanbans as needed.

Gain Control

- **Monitor consumption and replenishment** at every step of the manufacturing cycle.

- **Multi-site environmental control** integrated with suppliers' environments to easily manage priorities as demand changes.

Gain Clarity

- **Unprecedented visibility throughout the supply chain** empowers decisions that have resulted in a 50% reduction in inventory.

- **Online monitoring lowers plant overhead and offers opportunity for continuous improvement** to the production schedule as well as on-time delivery.

Gain Confidence

- **Real time demand signals and automated supplier replenishment** helps to confidently right-size inventory levels and ensure on-time production.

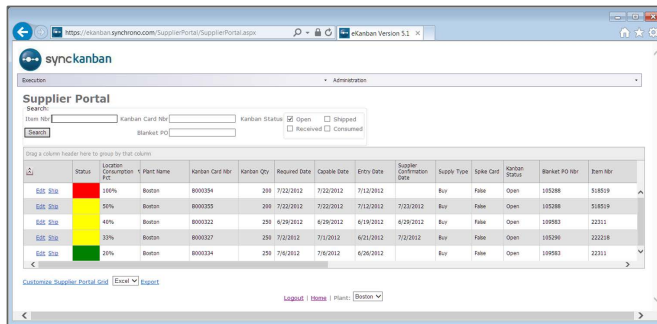
- **Respond to over- and under-supply situations accurately and instantly** from either end of the manufacturing pipeline.

Gain a Competitive Advantage

- **Continuous improvement activities are driven by source reports** that track total supply and delivery times, lead times, point-of-use replenishment percentages and other decision points. This brings more value to planning and offers a competitive edge.

- **Simplified work streams and enhanced visibility free up capacity for value-added activities.** Supply managers can now focus more time on new supply contracts and strategic sourcing.

Reduce administrative paperwork and enable suppliers to provide materials just-in-time with real-time visibility of inventory consumption through our supplier portal.



Sync Inventory with Demand

- Manage manufacturing, transfer and supplier kanbans in one place.
- Automatically adjust Kanban Loop (K-Loop™) sizes based on changes in demand.
- Manage multi-site environments.
- Portals allow visibility across all K-Loops.
- Automated supplier and supermarket replenishment.
- Tracks demand variation to identify inventory costs/turns.
- Data-driven source performance reports.
- Real-time email/dashboard alerts.
- Work cell calendar drives work cell priorities.
- Install via SaaS Cloud-based hosted model or on-premise.

How it works





SyncKanban™ is an automated pull-based inventory replenishment system and much more. It provides end-to-end visibility from the order, to the shop floor, through the supermarket and out the door. Here are four of the key characteristics of SyncKanban:

1. Set up is easy and the interface has a familiar, intuitive Windows® look and feel.
2. It manages all of the eKanbans throughout production and signals replenishment needs as well as escalated alerts to avoid disaster.
3. It can be scaled across multi-site environments and integrated with suppliers' kanbans.
4. It can be hosted by Synchrono® or installed on-site.

SyncKanban guides the user through daily tasks and provides actionable reporting to help reduce the cost and waste associated with ineffective process administration.

SyncKanban and the Synchrono Demand-Driven Manufacturing Platform

The Synchrono® Demand-Driven Manufacturing Platform enables the real-time visual factory of the future synchronizing your workforce, methods, machines, materials and information. And while SyncKanban has great value by itself - as part of the integrated Synchrono Demand-Driven Manufacturing Platform, SyncKanban:

-  Aligns inventory consumption information with **SyncManufacturing™** so planning and scheduling can quickly adapt to any material constraints.
-  Ensures financial data collected through **SyncOperations™** is connected to SyncKanban to synchronize supplier replenishment against open purchase orders.
-  Provides real-time supply signals that are visible to all through **SyncView™** with the ability to easily tap into detail to determine on hand inventory and supplier replenishment dates.
-  Emptied kanbans can signal an alert using **SyncAlert™**.

